

Steuben County REMC's

INDIANA

CONNECTION

STEUBEN COUNTY REMC

ANNUAL MEETING

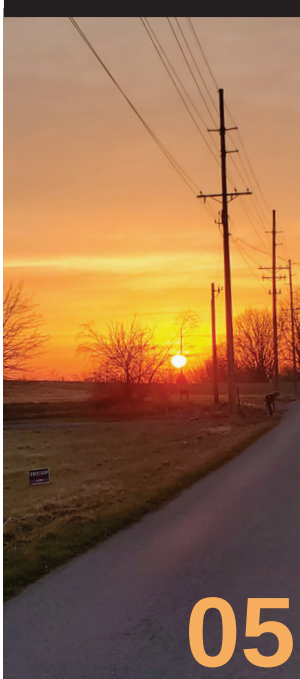
OFFICIAL NOTICE

*Voting instructions,
candidate biographies,
CEO report, financial
information inside*



MAY 2021

MAY



05

co-op news



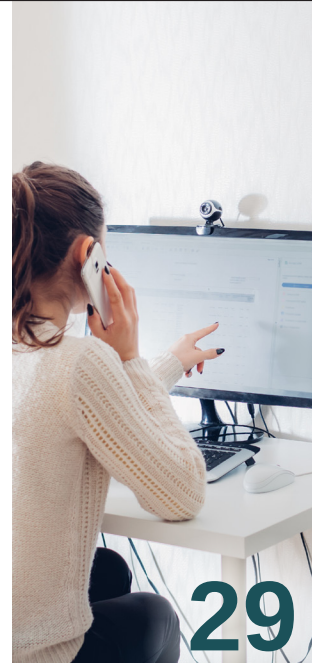
18

food



20

cover story



29

safety

03 **FROM THE EDITOR**

05 **CO-OP NEWS**

Steuben County REMC official notice.

10 **ENERGY**

Surge protectors: What you need to know to keep your gear protected.

12 **INSIGHTS**

14 **COUNTY OF THE MONTH**
Spotlighting Noble County.

15 **INDIANA EATS**
Speedway's 'downtown' offers plenty of good eats.

16A-D **CO-OP NEWS**
Steuben County REMC official notice.

18 **FOOD**
Kabob recipes are all a'skewered.

20 **COVER STORY**
The wonder of wandering:
Life off the highway.

25 **RECALLS**

26 **CO-OP NEWS**
Does the REMC owe you money?

27 **OUTDOORS**
Turkey buzzard's vicious cousin.

28 **WABASH VALLEY NEWS**

29 **SAFETY**
Electrical hazards can exist in the office, too.

30 **PROFILE**
History of electric co-ops traced through life of original member.

FOLLOW US ON SOCIAL MEDIA

Indiana Connection



On the cover

The right-of-way crew takes great pride in helping keep the lights on in Steuben County by taking preventative measures for storms.

SAVE THE DATE

VIRTUAL ANNUAL MEETING

June 12

Due to the continued group gathering regulations and uncertainty, the 2021 Annual Meeting will be held virtually this year.

Voting information will be mailed and/or emailed to you on May 10. Watch for an email or letter with the instructions.

Follow us on Facebook (Steuben County REMC), subscribe to our YouTube channel (Steuben County REMC) and visit our website (www.remcsteuben.com) to see the annual meeting reports and the results of the election on June 12.

All members who vote in the director election will be entered to win giveaway prizes.

WATCH THE ANNUAL
MEETING ON JUNE 12 ON...



Facebook



YouTube



Our Website, remcsteuben.com

TIMELINE

May 10

Voting will be available online, on SmartHub and through mail-in ballot. *Learn how to vote on page 7.*

June 10

Voting closes. All ballots must be received.

June 12

Voting results released.

Steuben County REMC



A Touchstone Energy® Cooperative

Office Hours

7:30 a.m. – 4:30 p.m.,
Monday – Friday

Contact Us

PHONE

260-665-3563

Call our office 24/7/365
to report an outage.

STREET ADDRESS

1212 S. Wayne St., Angola, IN 46703

MAILING ADDRESS

P.O. Box 359, Angola, IN 46703

EMAIL

CEO@remcsteuben.com

remcsteuben@remcsteuben.com

CALL BEFORE YOU DIG

Please call 811 at least two days
before you dig.

Management Team

KEVIN KEISER, CEO

DUSTIN EVERETTS,
Operation/Engineering

JOSHUA DURBIN, Member Services

STEVE SMITH, Finance

DAVE SHORT, Broadband Operations

How to Understand Your Bill

Facilities charge.....	\$19/month
First 250 kWh.....	9.9 cents per kWh
Next 750 kWh.....	9.1 cents per kWh
All over 1,000 kWh.....	8.3 cents per kWh
Wholesale power tracker...+\$0.008998 per kWh	
Dusk to Dawn Light.....	\$10.30/month
Indiana Sales Tax.....	7%

2021 Annual Meeting

JUNE 12, 2021

Board of Directors

GARY SHOUGH, Secretary/Treasurer
(District 1, Millgrove and Greenfield townships)

SCOTT CHARTERS

(District 2, Jamestown Township)

BILL SNYDER

(District 3, Fremont and Clear Lake townships)

MIKE KURTZ

(District 4, Jackson Township)

CARTER SNIDER

(District 5, Pleasant Township)

GARY STROH

(District 6, Scott and York townships)

WAYNE GINGERICH, President

(District 7, Salem Township)

LARRY JACK, Vice President

(District 8, Steuben, Smithfield and Grant townships)

MARC NELSON

(District 9, Otsego, Richland and Franklin townships)

Disconnection Charges

**DISCONNECT DATES ARE
2.5 WEEKS AFTER DUE DATE**

Reconnection Charge: \$50
(7:30 a.m. - 4:00 p.m.)

Reconnection Charge: \$200 (after 4 p.m.)
Deposit: \$200

Returned check fee: \$25

Your Co-op Advantages

- Annual Meeting
- Budget Billing
- Coop Solar Program
- Dusk to Dawn light
- Indiana Connection Magazine
- New Service Electrical Consults
- Operation Round Up
- Patronage Refund
- Residential/ Commercial Energy Evaluation
- Residential/ Commercial Rebates
- Safety Demos
- SmartHub
- Vegetation Management
- Water Heater Rebates
- Youth Programs

CEO REPORT

Our next chapter



2020 was without a doubt a challenging year. The impact from this pandemic certainly affected us all and it will undoubtedly bring

about a new normal as we move forward. However, it's time to move on to the next chapter in this story even if there is some lingering carry-over, and your cooperative is committed to helping pave the way.

To us, this process starts with providing you reliable, dependable, and affordable electric energy. During this pandemic, electricity became the essential life blood in our daily lives when we all too often were forced to do everything from home. Keeping the lights on has never been more important and I would like to thank and commend our employees for their efforts. Every day they came to work or were actively on call to

ensure the system was maintained and the power was flowing to your homes and businesses. Despite all the challenges, your cooperative had one of its most successful years. Sales remained solid and very consistent with 2018 and 2019. Operating margins were up to \$914,800 due primarily to reductions in wholesale power costs. Capital credits of \$864,000 were returned to our members during the spring and fall of last year. In addition, your cooperative added more miles of line and met the needs of more new members than we have in nearly 15 years, while keeping our total number of outage hours down to the lowest level in three years.

Another important step in moving on to the next chapter is recognizing our underdeveloped and underserved areas. In the 1930s an example of this would have been the availability of central station electric energy in rural America. Today, the rural

areas of our country are facing a new infrastructure deficit: broadband internet access. If left unchanged, this will have a huge impact on our quality of life and our ability to compete economically. Just think about how things have changed in the way we communicate, teach our children, and even receive entertainment today and you will see the influence of the internet. Throughout 2020 and during the pandemic the internet became even more important because in some cases it was our only link to the outside world.

That's why your cooperative has decided to help eliminate this information divide and bring broadband internet service to northeast Indiana. The first step in this process was the acquisition of the Steuben County Community Foundation's dark fiber network commonly referred to as iMAN. The terms of the transaction were

Steuben County REMC news

agreed to in October 2020 and your cooperative retained ownership of the asset this Jan. 4. This 200-mile network of fiber optic cable will help to facilitate and ultimately become a springboard to our Fiber to the Home (FTTH) network we plan to build over the over the next three to four years. Once complete every Steuben County REMC member will have access to high-speed internet service. It should meet our region's needs for generations and it will be operated under the same not-for-profit business model, commitment to service and fair pricing as you have come to expect with our electric service.

We plan to begin making necessary changes to our poles so they can accept the additional weight and loads from the FTTH network this summer and begin building phase 1 of the network on the west side of our service territory this fall. Phase 2

is scheduled to begin in the winter of 2022 and cover the north and lakes region, with phase 3 and 4 following in a clockwise rotation around our service area in the following year. If everything goes well with the availability of resources, internet service with speeds up to a gigabit will be available in the area and become the new norm.

When we consider the difficulties we all faced last year, it is easy to see why our optimism for the future could wane. Times have been hard and we still face challenges, but there is hope and we are getting nearer to the light at the end. In fact, if we continue to work together, we believe that the next chapter in our cooperative's story is upon us. It will bring us a future and quality of life that will be as bright as ever.

KEVIN KEISER
CEO

Voting INSTRUCTIONS

VOTE BY MAIL

- Mark your selection by completely filling in the box next to your choice.
- Detach ballot and place in the enclosed return envelope. Mail to Survey & Ballot Systems, 7653 Anagram Drive, Eden Prairie, MN 55344.
- Do NOT include bill payment in the return envelope.
- Ballots must be received by June 10.
- Please allow sufficient time for delivery.

VOTE ONLINE

- To access the login page of the official 2021 SCREMC Election, please type **directvote.net/SCREMC** into the address bar located at the top of your internet browser screen.
- Above and to the left is your member number and your election passcode. Use both of these numbers to log in.
- Once registered, follow the online voting instructions.
- Online voting begins on May 10 and ends at 11:59 p.m. ET on June 10.
- Do not mail your ballot if you plan to vote online.

VOTE ON SMARTHUB

- **App:** Open your SmartHub app, log in and click the "vote now" button.
- **Online:** Log in to your SmartHub online account and click the "vote now" button.
- Online voting begins on May 10 and ends at 11:59 p.m. ET on June 10.
- Do not mail your ballot if you plan to vote online.

If you have any problems voting online, please email support@directvote.net or call 952-974-2339.



C/O SURVEY & BALLOT SYSTEMS
PO BOX 46430
EDEN PRAIRIE, MN 55344-6430



Presorted
First-Class Mail
U.S. Postage
PAID
Permit #31639
TWIN CITIES MN

BALLOT ENCLOSED



DirectVote

NEW!

Vote through
SmartHub on
your mobile
device

**ANNUAL MEETING
PACKET MAILED MAY 10**

Steuben County REMC news

Your board of directors

DISTRICT 1:

Gary Shough

DISTRICT 2:

Scott Charters

DISTRICT 3:

Bill Snyder

DISTRICT 4:

Up for election

- Mike Kurtz, incumbent

DISTRICT 5:

Up for election

- Carter Snider, incumbent

DISTRICT 6:

Gary Strohm

DISTRICT 7:

Wayne Gingerich

DISTRICT 8:

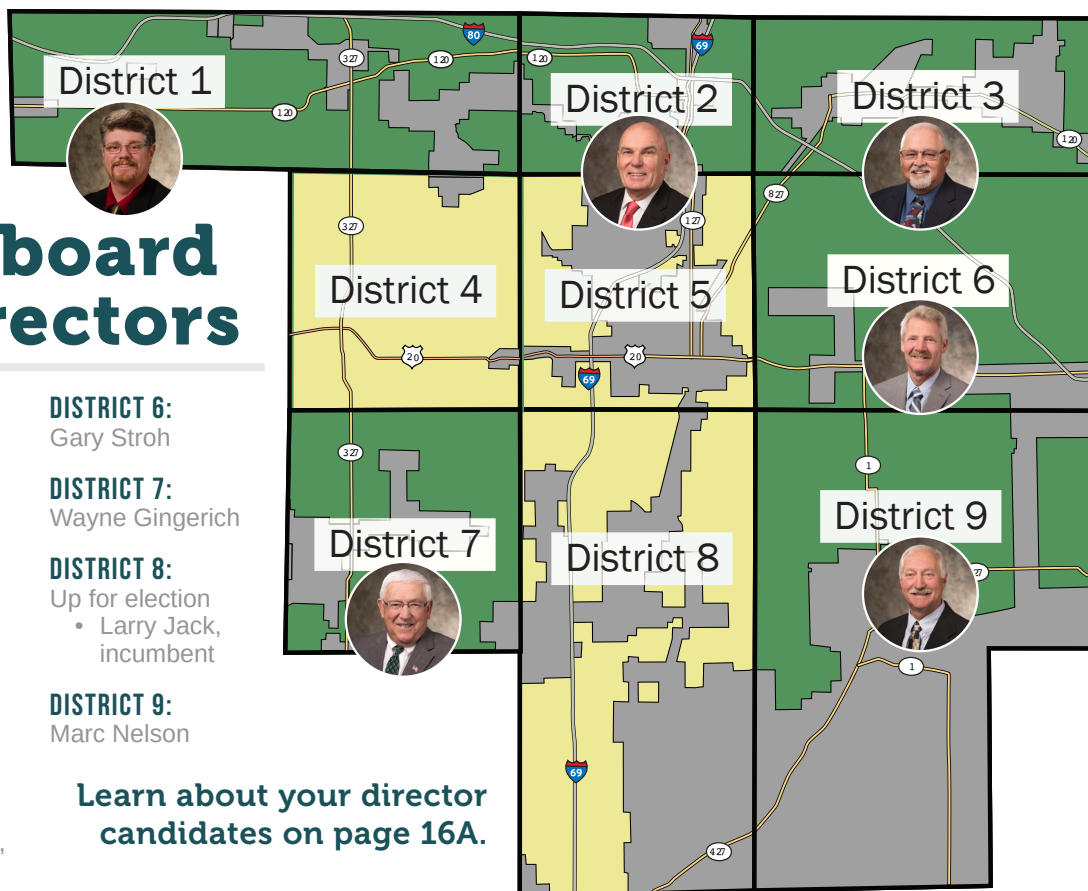
Up for election

- Larry Jack, incumbent

DISTRICT 9:

Marc Nelson

Learn about your director candidates on page 16A.



2020 OPERATION ROUND UP REPORT

Small change changes lives

Operation Round Up is a program that allows Steuben County REMC members to automatically round up their monthly bills to the next dollar. The maximum a member would donate is \$11.88/year, but an average donation is \$6. The change is pooled together into a fund that is overseen by a group of members and two Steuben County REMC employees with a passion for our local community.

The Operation Round Up program has donated over \$600,000 to more than 520 projects in our local community in the 16 years since this program was started. The organizations that have been granted funds are non-for-profit that help with economic development or improve the quality of life of our membership.

Local non-for-profit organizations can apply for funds. To see more information go to www.remcsteuben.com/ORU. If you would like to opt-in to the program, call our office at 260-665-3563.

We would like to thank the Operation Round Up volunteer board — Gus Reed (president), Deb Delancey (vice president), Lori Kain and Craig Ralston — for their time and commitment to bettering our community.



MORE THAN \$45,000 DONATED IN 2020

Grantee

Bowen Center for summer programming supplies, food and activities

Cameron Memorial Community Hospital for respiratory clinic and telehealth mobility

Junior Achievement for Steuben County Elementary programming

Sutton's Deli and Monument Pizza for 200 free meals given away to help with pandemic

Cahoote's Coffee Café to provide food to children during the pandemic

Big Brothers Big Sisters for recruiting, screening and training adult volunteers

Christ Life Revival for back-to-school bash

YMCA of Steuben County for water safety equipment

The Vine Early Learning Center for furniture

Steuben County Economic Development Corporation for project prospect mining

McMillen Center for preventative health education for Steuben County youth

Community Harvest Food Bank for farm wagon

American Red Cross for home fire relief

MEET YOUR *director candidates*

Exercise one of the greatest benefits of being a member of an electric co-op by voting for the upcoming year's board of directors. Districts 4, 5 and 8 are up for election.

DISTRICT 4: JACKSON TOWNSHIP

Mike Kurtz

Mike Kurtz is a grain and cattle farmer in Jackson Township. He raises Angus and Limousin cross beef cattle, as well as corn and soybeans. In



addition to his work on the farm, Kurtz drives a school bus for the Prairie Heights School Corporation.

He and his wife, Tina, have eight children and 11 grandchildren. His hobbies include cutting wood, motorcycle riding and hunting. He belongs to the Sons of the Legion at American Legion Orland Post 423 and is active in the American Legion Riders Association. He also sits on the board of directors for Jackson Township. He enjoys spending time with his children and grandchildren.

Serving as a director for Steuben County REMC is his way of giving back to the community. He feels our REMC has certainly played an important part in bringing about positive changes in the quality of life for those living in northeast Indiana. Kurtz is the incumbent director from District 4.

DISTRICT 5: PLEASANT TOWNSHIP

Carter Snider

As a current director, Carter Snider is honored to have received your support in the past and will continue to earn your support through his dedication to our co-op.



Since elected to the board, Snider has completed the Cooperative Credential Director certificate and Board Leadership Certificate from NRECA. He also has completed continuing education from NRECA on the topics of new, strategic and emerging technologies; financial decision making; and ethical decision making. In addition, Snider includes time for co-op learning activities through podcasts, videos, articles of interest and board and member conversations.

He and his wife, Sandy, have been members of Steuben County REMC since 1999. He has volunteered on numerous charitable and service organizations over the years, including the board of Steuben County's Operation Round Up from 2010 until 2014 when he was appointed to the REMC's board. Snider is the incumbent director for District 5.

DISTRICT 8: STEUBEN, SMITHFIELD AND GRANT TOWNSHIPS

Larry Jack

Larry Jack is the owner and operator of Larry's Repair Service in Pleasant Lake, repairing farm equipment. He and his



wife, Karen, have one son. He belongs to the Pleasant Lake Lions Club and the Steuben County Antique Power Association. He likes to spend his free time working with antique farm equipment.

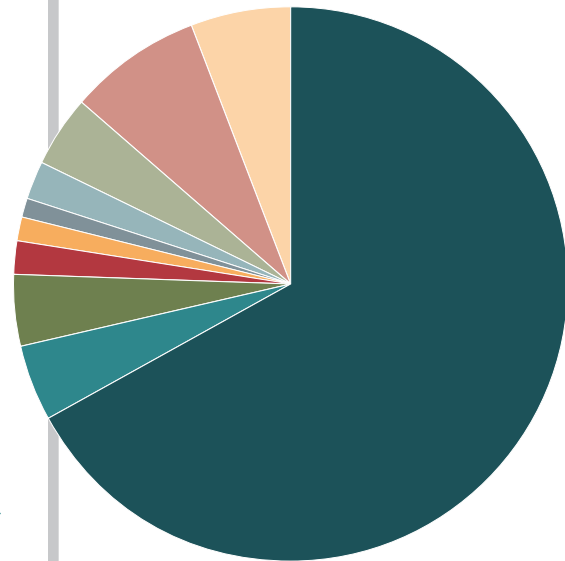
He has always been interested in the REMC and how it serves the members and the community. Jack is the incumbent REMC director from District 8 and is currently serving as the vice president of the board. He is a director on the board of Indiana Electric Cooperatives. Larry has earned the Credentialed Cooperative Director certificate, Board Leadership Certificate and Director Gold certificate.

Financial statements

Statement of revenue and expenses

	2020	2019
REVENUE		
Operating Revenues	\$21,493,572	\$20,979,925
Expenses		
Cost of purchased power	\$14,401,689	\$14,612,209
Operating expenses	951,038	821,156
Maintenance expenses	913,116	933,840
Customer and sales expenses	569,615	583,185
Administrative and general expenses	1,644,798	1,739,619
Depreciation expense	1,217,574	1,162,574
Tax expense	424,457	403,118
Interest expense	456,480	438,405
Total expenses	\$20,578,767	\$20,694,106
Operating margins	\$914,805	\$285,819
NON-OPERATING MARGINS		
Interest on investments	25,693	34,774
Other non-operating margins	4,676	1,993
G&T and other patronage capital	762,167	706,915
Gain on disposition of general plant	12,500	-
Subsidiary income	2,818	2,373
Total margins	1,722,659	1,031,874
Members' patronage capital beginning of year	\$16,165,727	\$15,968,392
Current margins	1,722,659	1,031,874
Capital credits retired	(864,312)	(868,594)
Capital credit escheat	(177,868)	(167,243)
Transfer from other equities	175,140	201,298
Members' patronage capital end of year	\$17,021,346	\$16,165,727

Where your dollar goes...



- Power Cost \$0.67
- Operating \$0.044
- Maintenance \$0.042
- Taxes \$0.020
- Customer Service \$0.014
- Sales \$0.012
- Interest \$0.021
- Operating Margins \$0.043
- Administration and General \$0.077
- Depreciation \$0.057



2020
BY THE NUMBERS

9,672
total number
of members

11.31
average cost
per kWh

11.06
meters
per mile



Balance sheet

ASSETS

	DEC. 31, 2020	DEC. 31, 2019
UTILITY PLANT		
Electric plant in service	\$34,843,316	\$33,249,576
Construction work in progress	342,980	231,024
Total	\$35,186,296	\$33,480,600
Less accumulated provision for depreciation	14,743,850	13,992,630
Net Utility Plant	\$20,442,446	\$19,487,970
OTHER ASSETS AND INVESTMENTS		
Investments in associated organizations	\$7,666,247	\$7,168,973
CURRENT ASSETS		
Cash and cash equivalents	\$4,642,870	\$1,660,867
Accounts receivable (less allowance for doubtful accounts of \$71,814 in 2019 and \$71,163 in 2018)	1,509,557	1,332,196
Accrued revenue	840,876	766,778
Materials and supplies	436,216	306,697
Other current assets	192,638	189,763
Total Current Assets	\$7,622,157	\$4,256,301
DEFERRED CHARGES	246,973	329,298
TOTAL ASSETS	\$35,977,823	\$31,242,542

EQUITIES AND LIABILITIES

	DEC. 31, 2020	DEC. 31, 2019
EQUITIES		
Memberships	\$216,740	\$213,756
Patronage capital	17,021,346	16,165,727
Other equities	1,861,419	1,643,843
Total equities	\$19,099,505	\$18,023,326
NONCURRENT LIABILITIES		
CFC mortgage notes	\$14,093,332	\$10,648,847
Post-retirement benefit obligation	385,267	359,239
Total noncurrent liabilities	\$14,478,599	\$11,008,086
CURRENT LIABILITIES		
Accounts payable		
Purchased power	1,247,550	1,179,030
Other	226,507	141,526
Customer deposits	147,402	149,952
Accrued taxes	213,581	210,456
Other current and accrued liabilities	564,679	530,166
Total current liabilities	\$2,399,719	\$2,211,130
TOTAL EQUITIES AND LIABILITIES	\$35,977,823	\$31,242,542

Summary of long-term debt

CFC MORTGAGE NOTES:	2020	2019
2.65% - 2.90%	\$246,954	\$351,661
3.30% - 3.85%	4,355,655	616,398
3.95% - 4.95%	6,552,460	6,534,181
5.00% - 5.95%	2,294,127	2,566,593
6.00% - 6.95%	126,937	580,014
TOTAL LONG TERM DEBT	\$13,576,132	\$10,648,847

Visit our website,
www.remcsteuben.com,
 for the 2020 Annual
 Meeting Minutes.

922.4
total miles
of line

5.3
miles
added

97
new services

\$864,000
capital
credit total

197,905,802
annual kWh sales

Steuben County REMC news

BOARD OF DIRECTORS

Office Held	District (Townships)
Wayne Gingerich President	7 (Salem)
Larry Jack Vice President	8 (Steuben, Smithfield and Grant)
Gary Shough Secretary/Treasurer	1 (Greenfield and Millgrove)
Scott Charters	2 (Jamestown)
William "Bill" Snyder	3 (Fremont and Clear Lake)
Mike Kurtz	4 (Jackson)
Carter Snider	5 (Pleasant)
Gary Stroh	6 (Scott and York)
Marc Nelson	9 (Otsego, Richland and Franklin)

CONSULTANTS

James A. McEntarfer	Corporate Counsel/ Lawyer
Leonard J. Andorfer & Co., LLP	Certified Public Accountants/ Auditors

EMPLOYEES

Job Title	Years of Service (As of Dec. 31, 2021)
Rodney Allen Journeyman/Lineman/ Line Foreman	34
Ann Charlton Meter Tech	27
Jennifer Duke Data Processing	7
Joshua Durbin Director of Member Services	9
Dustin Everetts Director of Operations/Engineering	—
Christopher Hamilton Journeyman/Lineman	22
Brittney Holden Communications Coordinator	3
Dennis Jack Journeyman/Lineman/ Lead Lineman	26
Kevin Keiser CEO	23
Gaven Kolb Right of Way, Tree Crew	4
Jessica Lash Member Services Rep	2
Matt Lorntz Journeyman/Lineman/Staking	27
Namon Meyers 4th Year Apprentice	5
Aaron Miller Journeyman/Lineman	8
Greg Miller Journeyman/Lineman	25
Braden Nichols Journeyman/Lineman	9
Steve Parnin Inventory Specialist	36
Jennifer Patterson Member Services Rep; Accounts Payable	6
Gary Ritter Journeyman/Lineman	34
Brett Shepherd Mechanic/Maintenance	10
Dave Short Director of Broadband Operations	—
Steven Smith Director of Finance	10
Donald Snyder Tree Crew Foreman	22
Hunter Stultz Right of Way, Tree Crew	—
Greg Sutton Journeyman/Lineman	42
Daylon Ulrich 2nd Year Apprentice	4
David VanAken System Engineer	15
Beth Welch Executive Assistant	20
Tamera Wise Member Services Rep; Collections	31
Sarah Zydiak Engineering Asst/ GIS Coordinator	4



COMBINED
YEARS OF
SERVICE

465

AVERAGE
YEARS OF
SERVICE

17.2

Thank you for
serving Steuben
County REMC
members!

Steuben County REMC news

MAY IS NATIONAL ELECTRICAL SAFETY MONTH

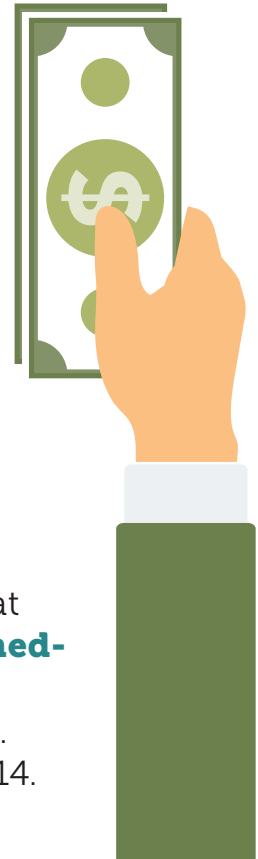
QUICK TIPS:

- Never plug an extension cord into another extension cord.
- Label circuit breakers to understand the different circuits in your home.
- Talk to your children about the importance of practicing electrical safety.
- Only use light bulbs that match the recommended wattage on the light fixture.

Does the REMC owe you money?

YOUR REMC IS MORE THAN AN ELECTRIC UTILITY. IT IS LITERALLY PUTTING MONEY BACK IN YOUR POCKET.

We issued checks in 2018 for members with capital credits from 2004–06. Please check the listing at www.remcsteuben.com/unclaimed-capital-credits to see if you recognize any names in this listing. Completed paperwork is due May 14.



EMPLOYEE ANNIVERSARIES



May 4: Rod Allen, journeyman lineman/line foreman (34th)

May 4: Kevin Keiser (23rd)

TRIVIA



True or False?

Co-ops are the only type of utility that return capital credits — to the tune of \$1.2 billion annually — to their members.

Answer: True

EFFICIENCY TIP



Avoid placing items like lamps and televisions near your thermostat. The thermostat senses heat from these appliances, which can cause your air conditioner to run longer than necessary.



SIGN UP TO BE A GRASSROOTS ADVOCATE.
VISIT ACTION.INDIANAEC.ORG.

CALENDAR



Mother's Day: May 9

PowerShift Deadline: May 15

Office Closed for Memorial Day: May 31

Virtual Annual Meeting: June 12

Operation Round Up Application Deadlines:
June 25, Sept. 24, Dec. 24